



TECHNICAL INFORMATION (T617; n66)

SIGMUND&CARL-T617

Spare Part Group n66

GLAZING

RECOMMENDATION FOR OPTICAL LENSES:

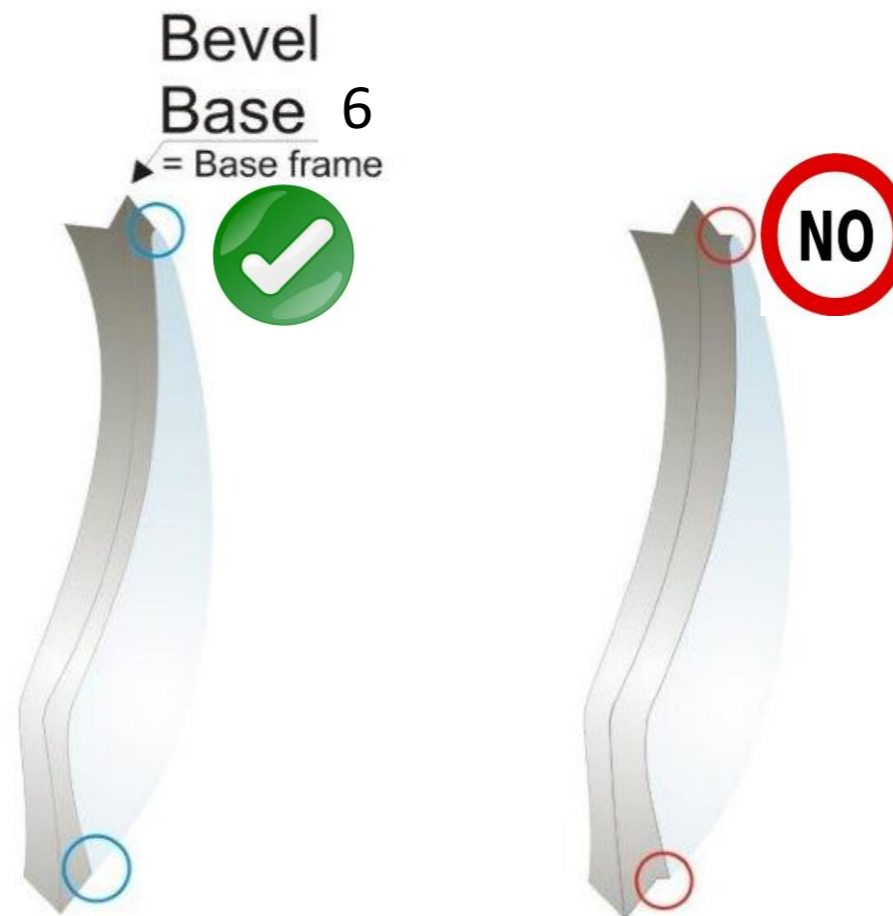
- Base curve 6 fits best
- Other base curves (3-6) possible
- All lens materials possible

GLAZING AID:


- Former
- OMA data



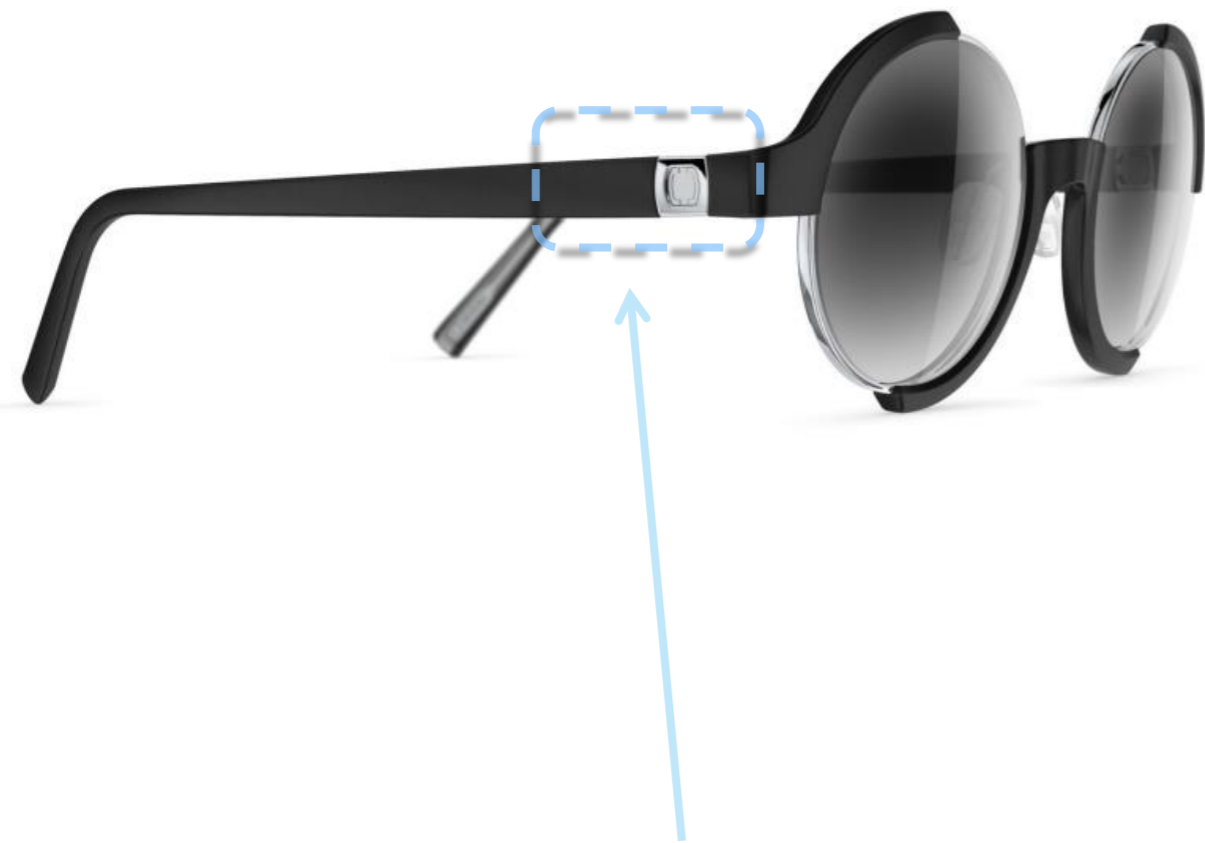
GLAZING



1. Neubau eyewear sun frames have a base curve 6. It would be advantageous when the bevel of the prescription lens has the same base curve! (base 6)

2. Please make sure that the bevel of the prescription lens is grounded on the outer edge of the prescription lens. 

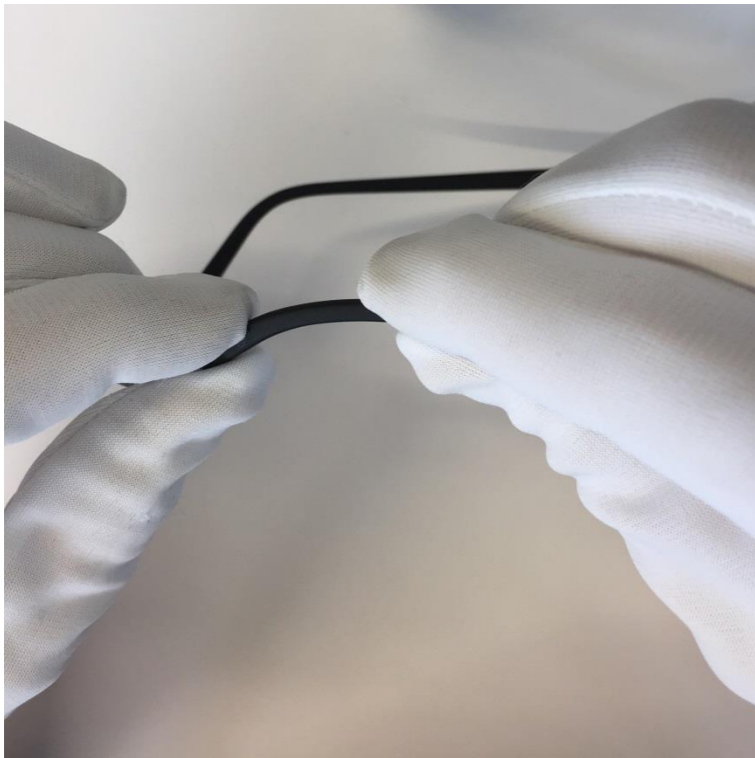
INCLINATION



Incline the temple at the logo hinge carefully.

Special radius design to prevent fissuring.

TEMPLE ADJUSTMENT



Straighten the temple end in little steps



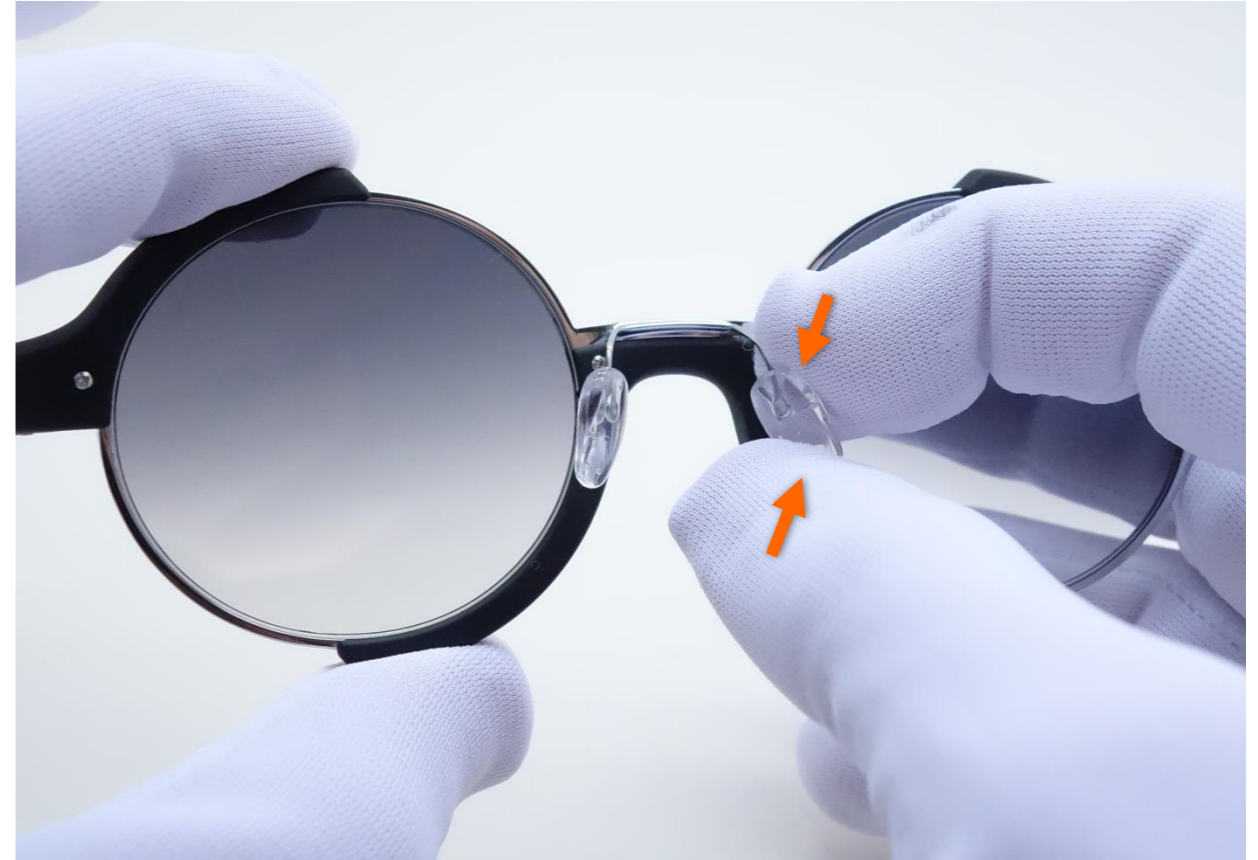
Ajust temple end by bending it



Please make sure to adjust the temple end directly at the needle

Material ist auch auf 70°C erwärmbar

NOSE PAD ADJUSTMENT



() neubau
EYEWEAR

