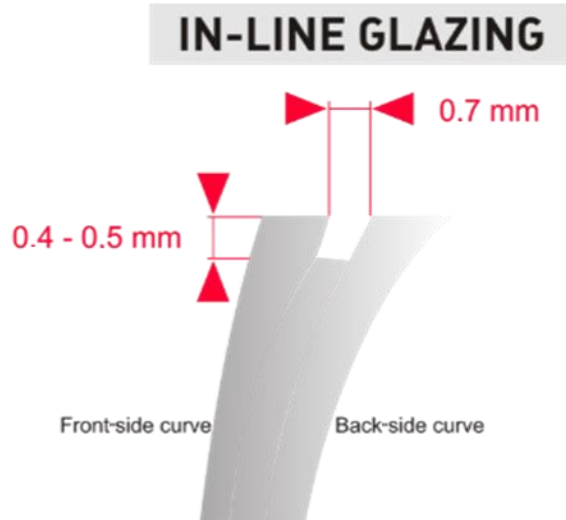


SPX Illusion Nylor Technical Instructions



SPX Illusion Nylon – General Information

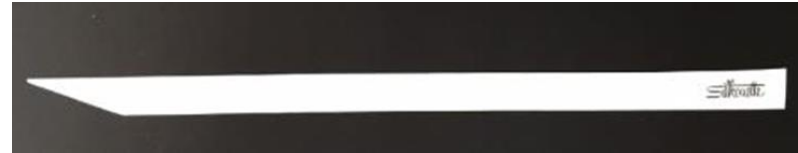
Note groove width and depth



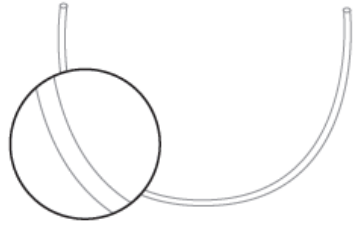
Silhouette Nylon Mounting Tool

Part number: VGLH3

- easy to handle
- smooth surface
- thinner than other nylon tools
- 1 end is tapered
- foldable material



SPX Illusion Nylon – General Information



NY 2

Part number: NY 2 - nylon thread



Part number: AP 11 - nylon thread fixation plate

Nylon Thread Exchange – SPX Illusion Nylon

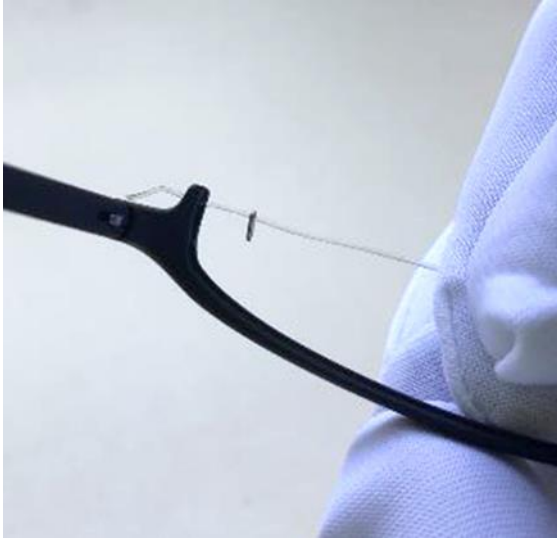


1. Use a lighter to melt a small ball at the end of the nylon thread



2. Insert the nylon thread through the nasal hole making sure the melted ball fits in the frame recess

Nylon Thread Exchange – SPX Illusion Nylon



3. Insert the nylon thread through one hole of the AP 11 fixation plate and the lower frame hole

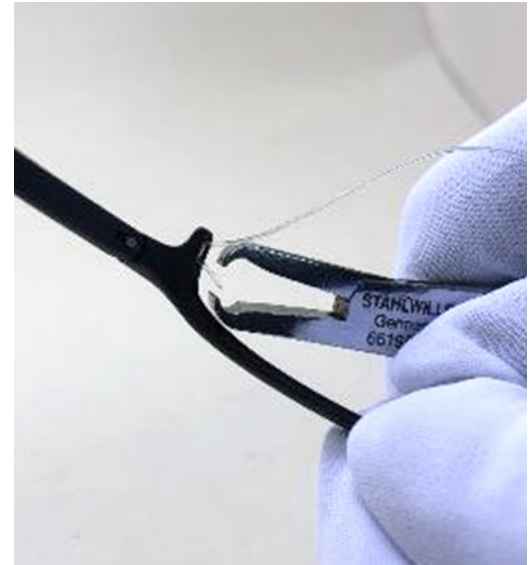


4. Insert the nylon thread from the outside of the frame back through the frame and the fixation plate

Nylor Thread Exchange – SPX Illusion Nylon



5. Verify that the fixation plate is seated in frame recess



6. Size the nylon thread to hold lens tight and trim excess

Nylon Thread Length Change – SPX Illusion Nylon

1. Push nylon thread through lower temporal hole
2. The loop will increase and fixation plate may loosen
3. Adjust the length of nylon thread
4. Once length is determined, verify the fixation plate is in recess of frame
5. Press excess thread through the upper hole
6. Trim the excess nylon thread if necessary



Inclination – SPX Illusion Nylon



1. Open the temple
2. Support the frame at the hinge area with your thumb and index finger
3. Incline the temple at the hinge

Temple Disassembly – SPX Illusion Nylon



1. Close temple and grab it with your thumb and index finger
2. Using pressure on your index finger, press the temple out of the frame

Temple Assembly – SPX Illusion Nylon

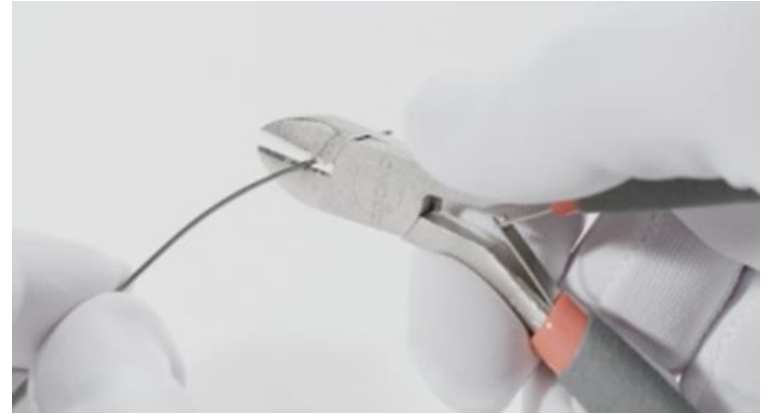


Align the temple opening with the hinge and press it on hinge

Temple Shortening, Glued Temple – SPX Illusion Nylon



1. Squeeze the most forward part of the temple cover with a plastic-tip plier to break the glue bond
2. Carefully pull the temple cover off



3. Shorten titanium wire with metal-diagonal cutter
4. File down sharp edges and burrs

Temple Shortening Glued Temple – SPX Illusion Nylon



5. Carefully remove remaining glue



6. Trim temple cover to desired length with sharp blade to match the original angle

Temple-End Gluing – SPX Illusion Nylon



1. Apply a small amount of glue (ex: Loctite 406) on the inside of the titanium wire as shown above
2. Slide the temple cover back onto the titanium wire and wipe off excess glue

Adjusting Temple End – SPX Illusion Nylon



1. Adjust the temple to the ear shape with large curves
2. During temple adjusting do not put pressure on the temple tip

Silhouette[®]
ICONIC EYEWEAR MADE IN AUSTRIA. SINCE 1964.