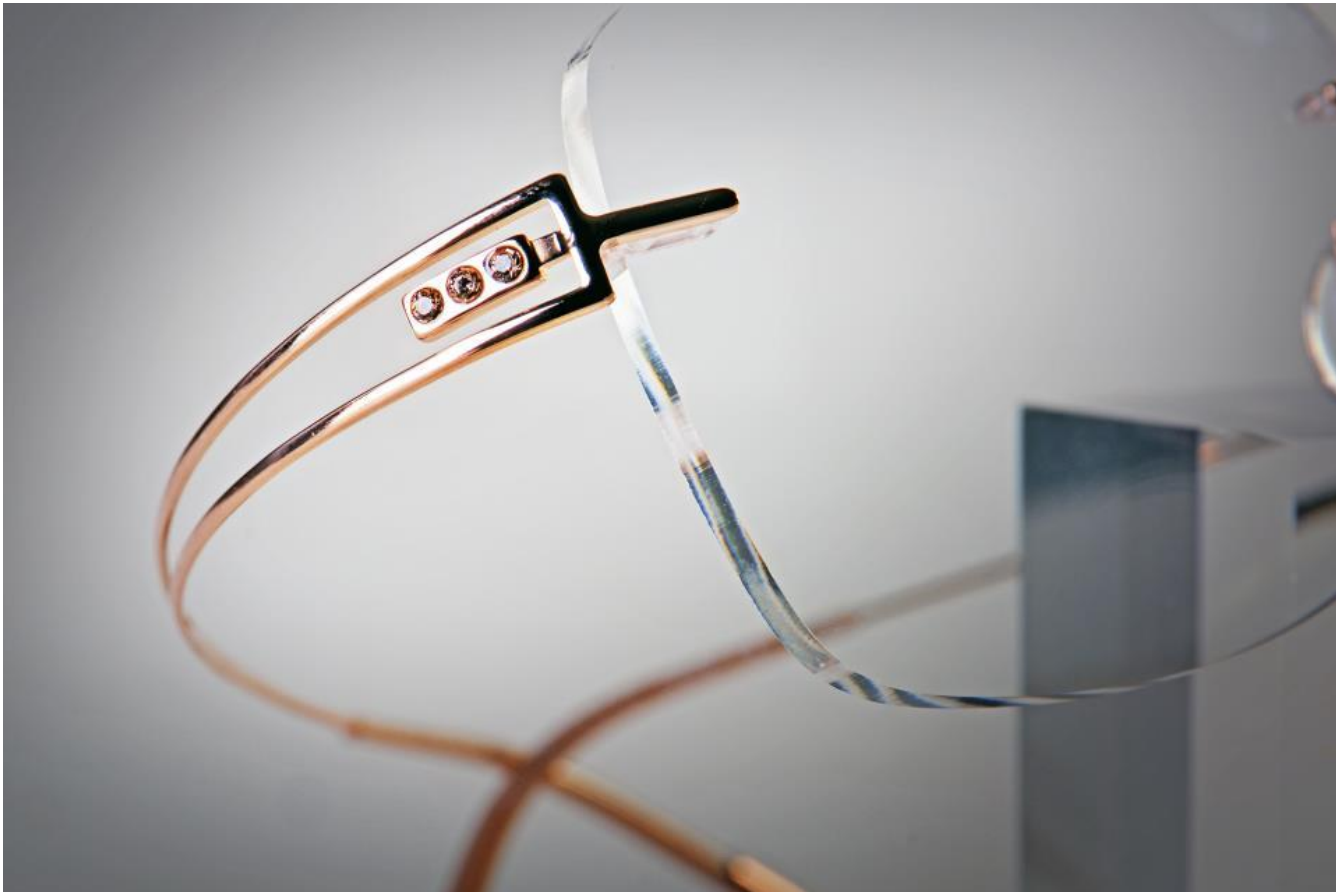








# Silhouette Light Attraction



## Glazing I Light Attraction

- optical lens Base 5 recommended, but also other Base curves possible
- Silhouette plier blue and BLS 58/98/97



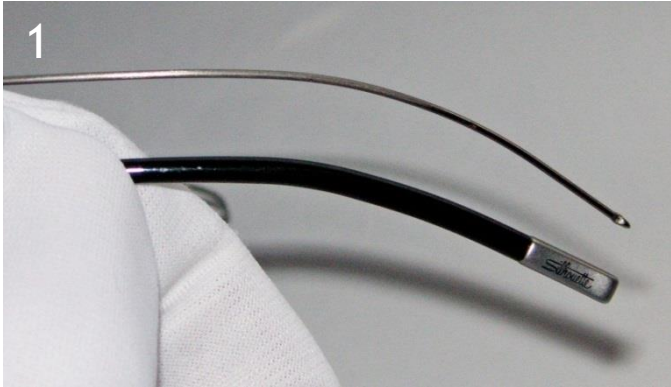
BLS 58 STANDARD	BLS 98 „long“	BLS 97 „short“
Standard Glazing 	for very thick lenses 	for very thin lenses 
lens size 2,0 - 6,5 mm	6 - 9,5 mm	1,3 - 3 mm
		
∅ 1,4 mm	∅ 1,4 mm	∅ 1,4 mm

## Adjustment | Light Attraction

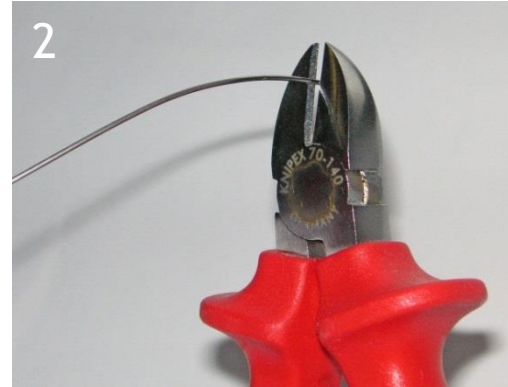
for Inclination bend the temple in the required direction in soft movements backwards



## Temple Shortening | Light Attraction



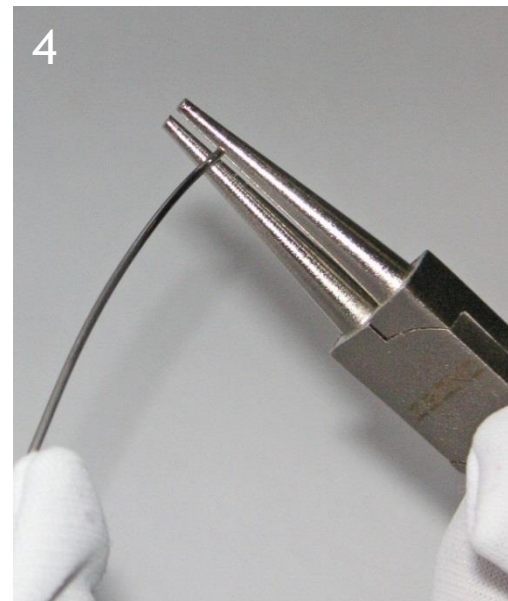
1  
Pull off  
temple  
end



2  
Shorten  
temple  
with  
diagonal  
cutter



3  
File down  
sharp  
edges and  
burrs



4  
Squeeze  
metal inlay  
with round  
pliers  
at the very  
end.  
Mount  
temple  
end.