

Infinity View Technical Instructions

Models 1594, 1595, 2922, 2923



Infinity View | Glazing with Silhouette Vision Sensation® Lenses

Silhouette now offers premium prescription lenses for all Silhouette frames.

Expertly crafted in Austria using our exclusive Panorama® lens designs, Silhouette Vision Sensation® lenses perfectly match the curve of every Silhouette frame.

This results in a complete visual solution that offers the wearer exceptional visual comfort and edge to edge clarity.

For more information visit:

<https://www.silhouette.com/us/us/vision-sensation>

or contact your Silhouette Account Executive



Infinity View | Glazing

Frame is designed with a 5.0 base curve

Other base curves will work and should have groove profile matching 5.0 base curve to maintain frame curve

Recommended lenses are High Index 1.6, 1.67, Polycarbonate and Trivex

Patterns available from Silhouette customer service at 800-223-0180

OMA shape files available at:
<https://portal.silhouette.com>
www.silhouettelab.com



Do not heat frame to aid lens insertion!
If lenses are large, resize to allow cold insert.
Do not clean Infinity View frames with alcohol!

Infinity View | Fullrim Groove Glazing

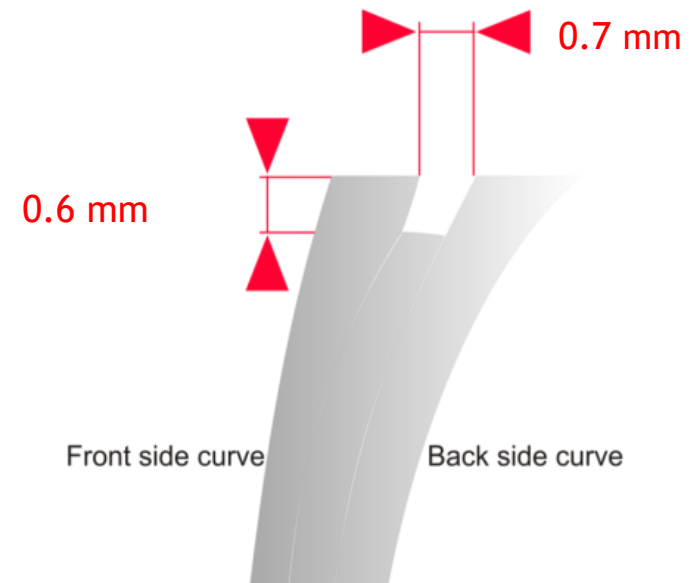
Lenses must be cut on-size and groove must follow size specification for proper lens retention.

For best aesthetics, lens curve should match the frame curve whenever possible to maintain the frame curve.

Groove should be positioned so the front surface of the prescription lens is flush with the front surface of the frame.

Flatter lenses should have groove cut to match a 5.0 base curve.

FULLRIM GROOVE GLAZING



Groove depth: 0.6 mm | Groove width: 0.7 mm

Infinity View | Fullrim Groove Glazing Rubber Ring

Infinity View shapes require the use of Silhouette Rubber Ring MH3 to prevent lens rotation.

Lenses should not be cut large to prevent rotation as this could stress the frame.



Do not heat frame to aid lens insertion!
Do not clean Infinity View frames with alcohol based liquids!

Infinity View | End Piece Mounting

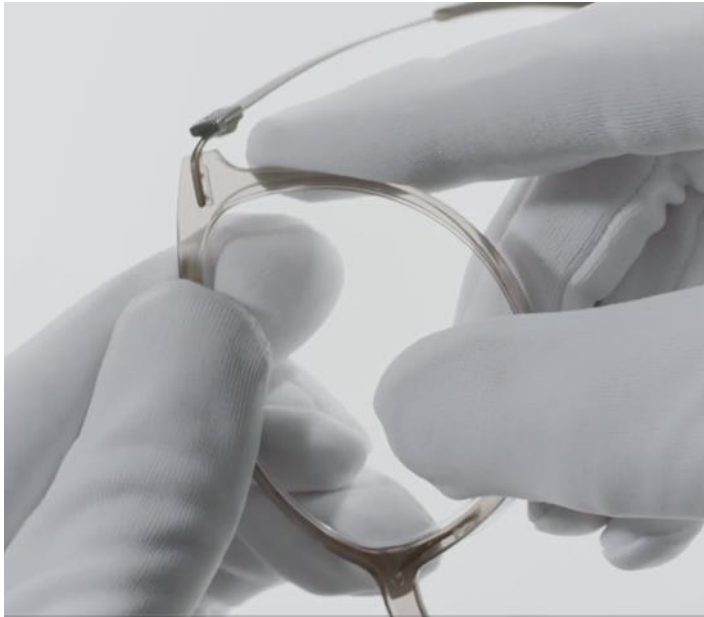
Infinity View end pieces are attached to frame front using BLS sleeve.

In the event of end piece needing replacement, use BLS 58 sleeve to remount.

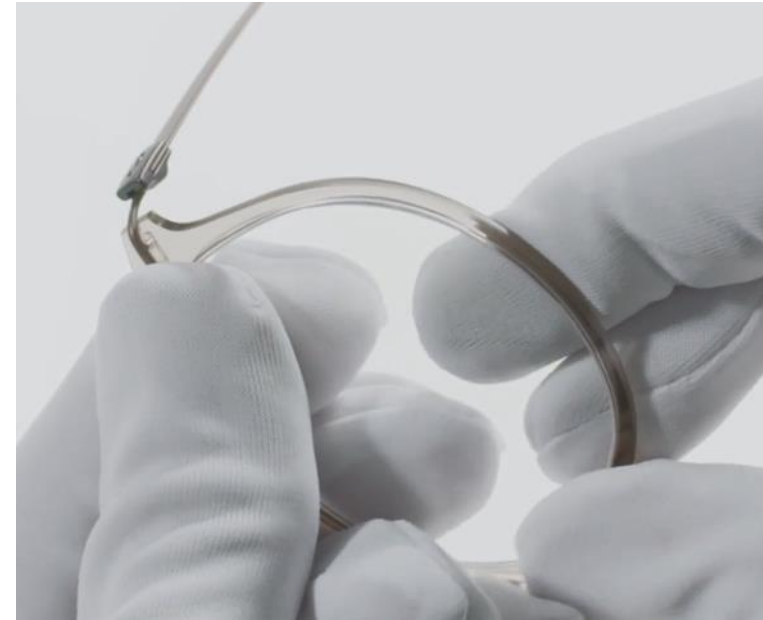
Compress using Silhouette mounting plier and turquoise or blue tip.



Infinity View | Lens Mounting



1. Insert lens from back side of frame starting at the nasal corner.



2. Continue inserting lens along the top to the temporal corner, continuing around circumference until lens snaps into place.

Infinity View | Lens Dismounting

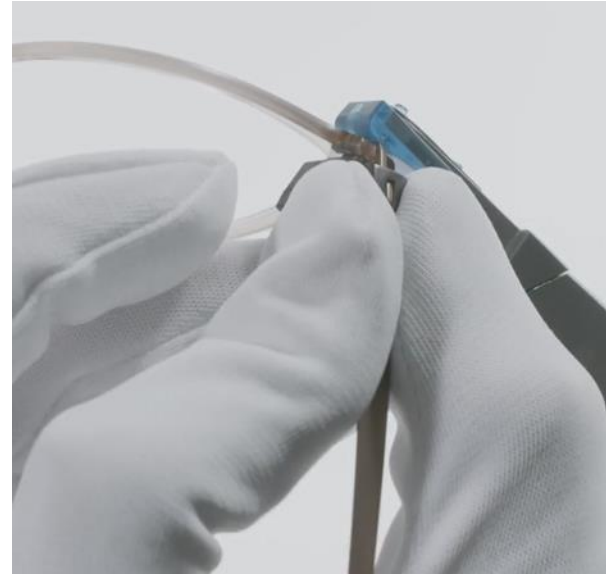


Partially push frame off lens toward the back and remove lens from front of frame.

Infinity View | Inclination



1. Open the temple.
2. Support BLS temple fixation firmly with the mounting pliers.



3. Hold end piece firmly and adjust inclination into the required position with fingers.

Infinity View | Temple Side Pressure Adjustment

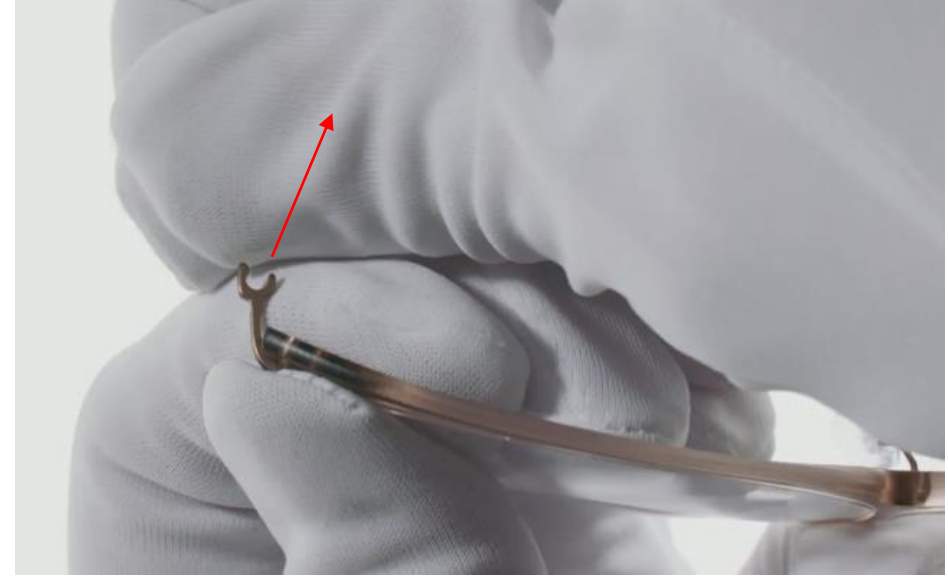


Hold the BLS temple fixation with the mounting pliers and press the temple end piece with your finger outward to open or inward with to close.

Infinity View | Temple Removal

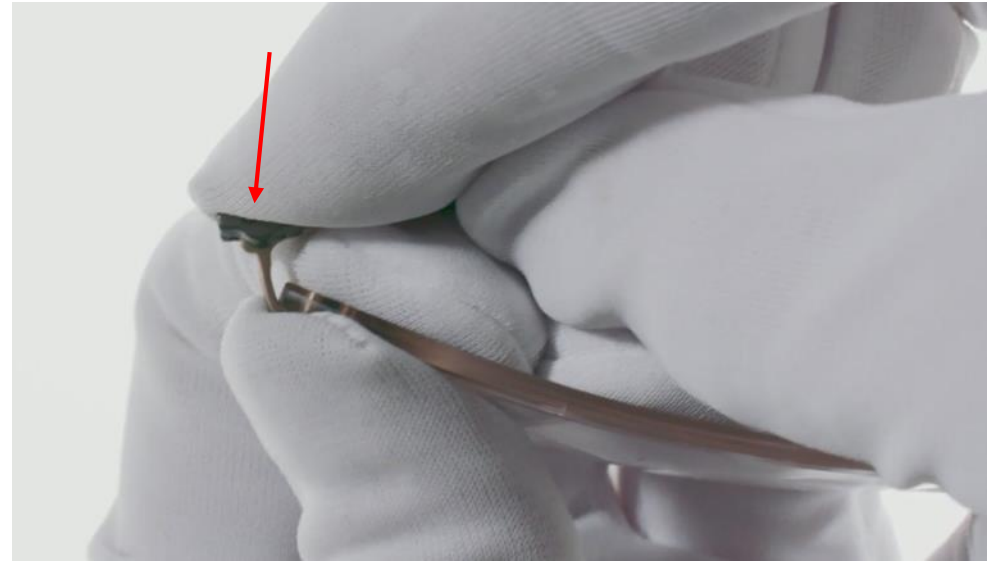


1. Close the temple as shown and hold the frame near temple mounting.



2. Grasp temple at hinge and pull off the endpiece in the direction shown by arrow.

Infinity View | Temple Installing



Align temple with the hinge and press on to endpiece.

Infinity View | Teflon Hinge Lubrication



After cleaning the frame in an ultrasonic bath, re-lubricate the hinge with Silhouette Teflon Lubricant.