

Identity Technical Instructions

Model 5535



Identity | Glazing with Silhouette Vision Sensation® Lenses

Silhouette now offers premium prescription lenses for all Silhouette frames.

Expertly crafted in Austria using our exclusive Panorama® lens designs, Silhouette Vision Sensation® lenses perfectly match the curve of every Silhouette frame.

This results in a 100% Silhouette eyewear solution that offers the wearer exceptional visual comfort and edge to edge clarity.

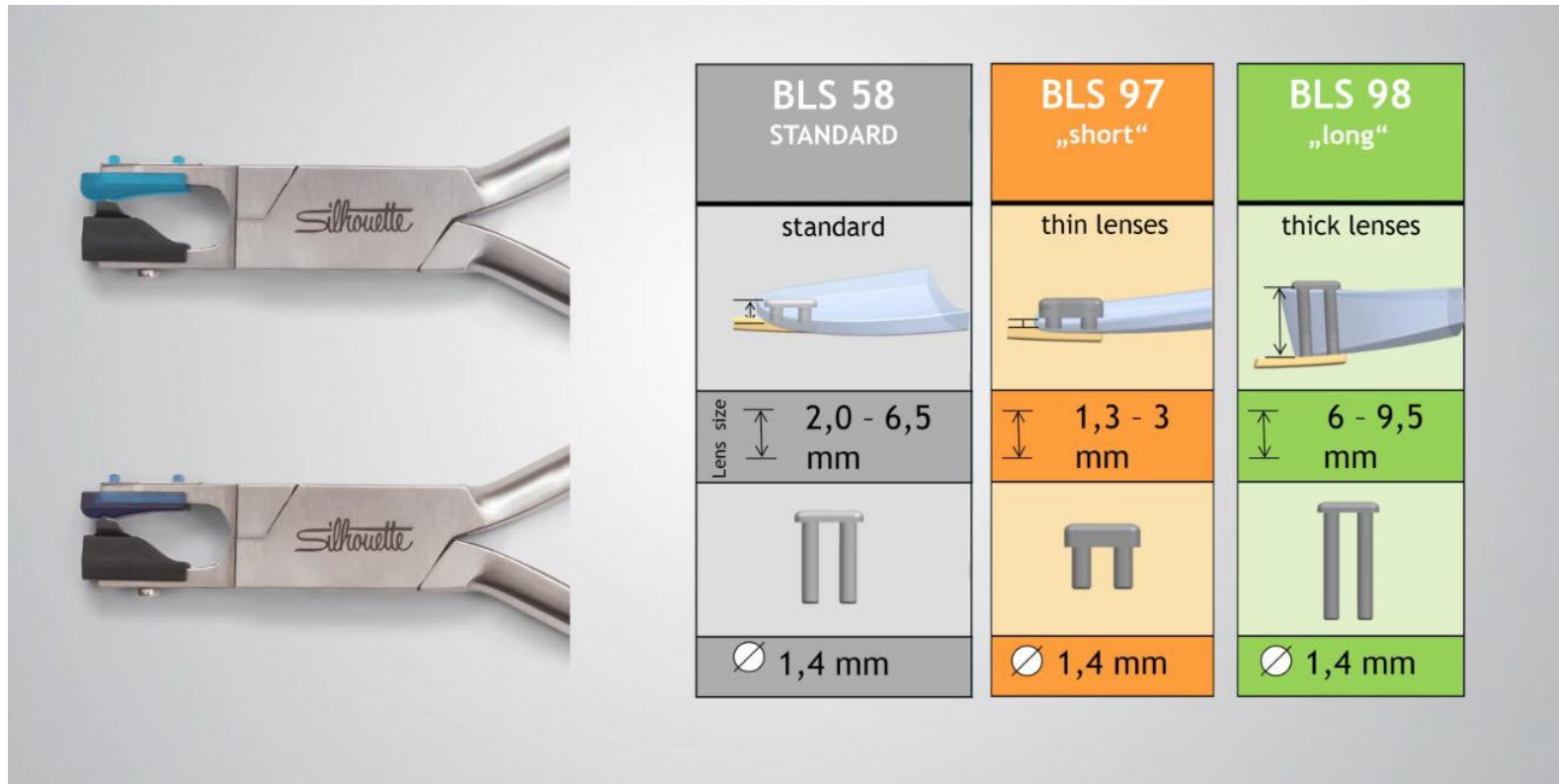
For more information visit:

<https://www.silhouette.com/us/us/vision-sensation> or contact your Silhouette Account Executive



Identity | Glazing

Mount lenses using BLS 58 sleeve and Silhouette mounting plier with turquoise or blue tip.



Identity | Glazing

Frame is designed with a 5.0 base curve

Other base curves will work and will require bridge adjustment

Recommended lenses are High Index 1.6, 1.67, Polycarbonate and Trivex

OMA shape files available at

<https://portal.silhouette.com>

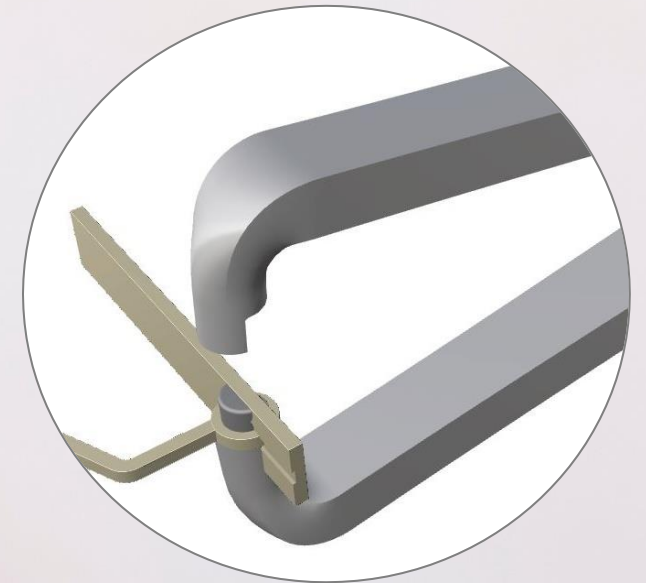
www.silhouettelab.com

Identity New Hinge

Design meets function



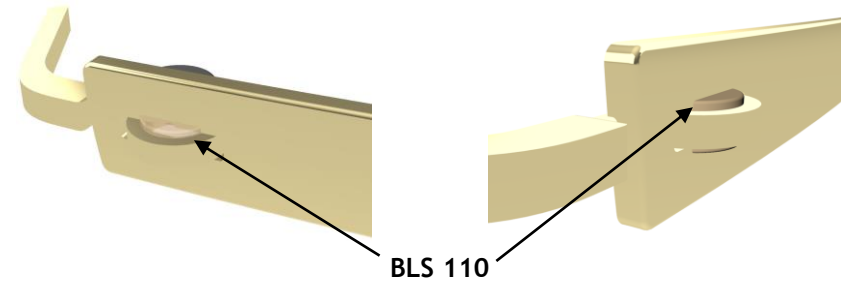
Improved disc hinge which delicately integrates into the temple flow



Easy to handle, leaflet with disk replacement instructions included with each chassis using new Silhouette plier tips

Identity | Tools for Disk Insertion

Use plier tips AC580 & AC581 on the Silhouette plier to assemble BLS 110 & BLS 111 disk parts into the hinge.



spare part number BLS 110 & BLS 111 AMBER: P 0000 22 0110 0100

spare part number BLS 110 & BLS 111 BLACK: P 0000 22 0110 0200



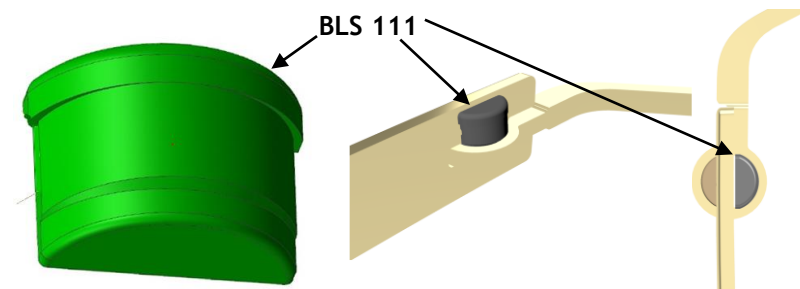
AC 580

spare part number : P 0000 11 0580 0000



AC 581

spare part number : P 0000 11 0581 0000



Identity | Inclination



1. Open the temple
2. Support lens mounting firmly with the mounting pliers
3. Hold temple near hinge and adjust inclination to the required position

Identity | Temple Opening Increase



1. Open the temple.
2. Support lens fixation firmly with mounting pliers.
3. Press the temple outward at endpiece with thumb.

Identity | Temple Opening Decrease



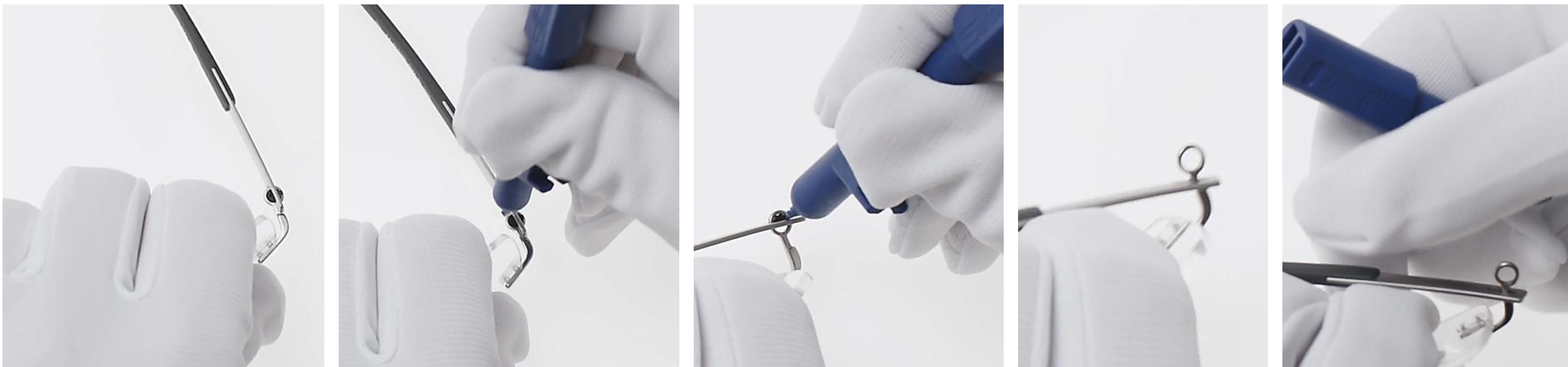
1. Open the temple.
2. Support lens fixation firmly with mounting pliers.
3. Press the temple inward at endpiece with finger.

Identity | Temple Bend



1. Adjust the temple to the ear shape with large curves.
2. Temple can be heated to aid in adjustment.
3. During temple-end adjusting do not put pressure on the temple tip.
4. Temple cover can be heated slightly to allow easier bending.

Identity | Temple Removal New Disk Hinge

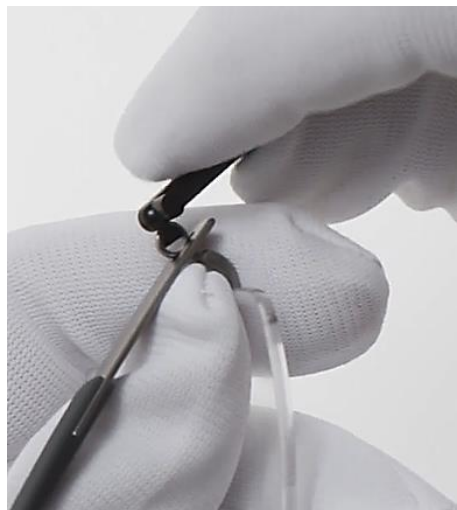


1. Place the top of the glasses on a firm surface.
2. Press out the BLS 111 (inside of the temple) with the blue multi-tool.
3. Press out BLS 110 (outside of the temple) with multi-tool.

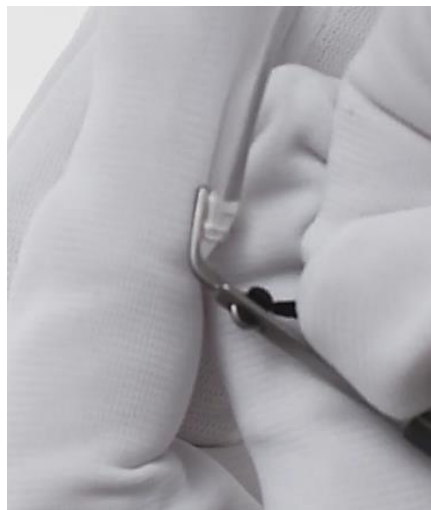
Identity | Temple Mounting New Disk Hinge



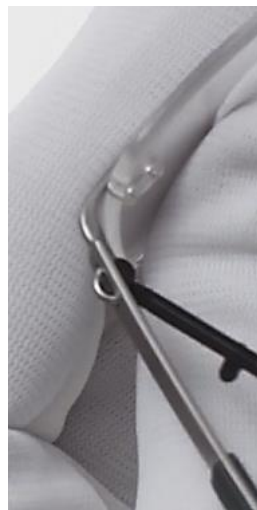
Thread the hinge stirrup into the hinge slot on the temple



From the top, position the BLS 110 in the hinge stirrup on the outside of temple



Slide the temple slot to contact the BLS 110. Place BLS 111 side of disk into inner side of temple and stirrup loop.



Place the mounting pliers with AC580 and AC581 tips on the inside of the hinge. Gently squeeze disk into the hinge.



The instructions included with Identity chassis contains further details on mounting and dismanting the temples.

Identity technical video available on the Silhouette Portal

Identity | Teflon Lubricant



After cleaning frame in ultrasonic bath or if temple movement is not smooth, lubricate hinge with a small amount of Teflon lubricant.

Identity | Teflon Lubricant

Cleaning in an ultrasonic bath or with ethanol is possible.

Avoid high temperatures such as the dashboard in the car or the sauna.

Always use the supplied case for storage.



Silhouette®

ICONIC EYEWEAR MADE IN AUSTRIA. SINCE 1964.