

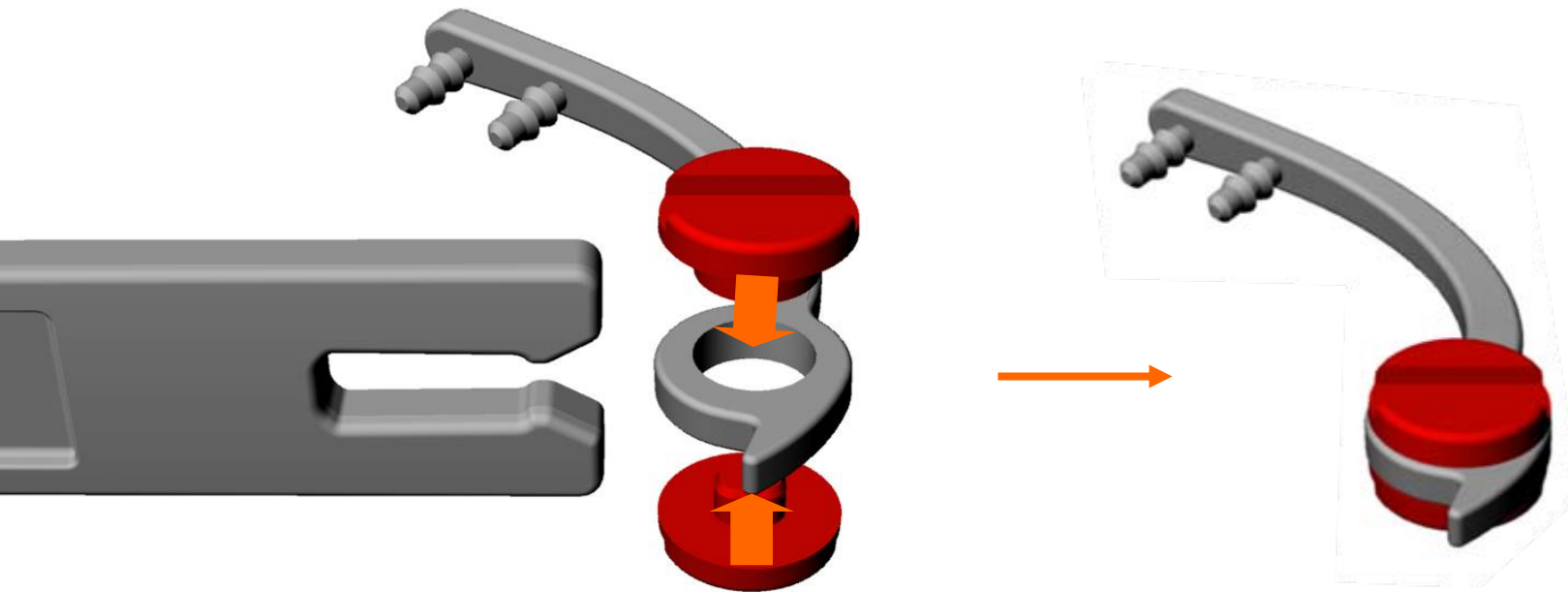


Silhouette[®]

TEMPLE ASSEMBLY
INSTRUCTIONS
LEATHERTOUCH

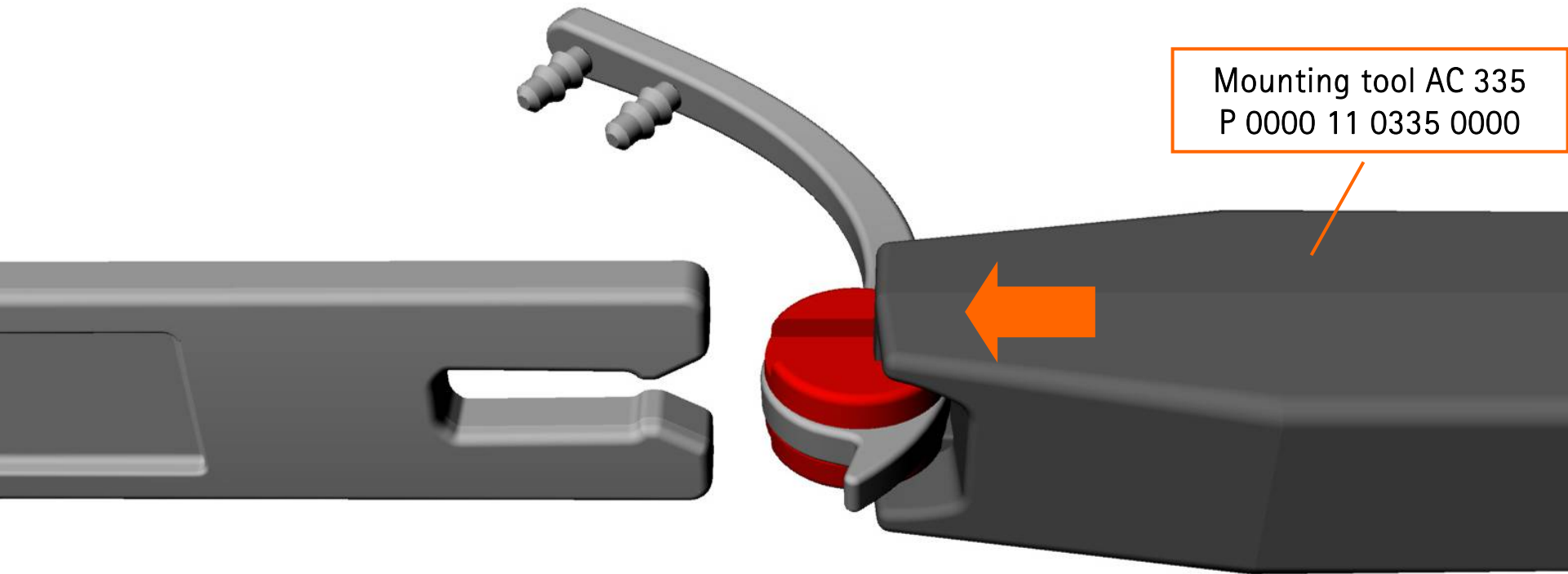


1. Fit hinge together



Insert oval hole and oval pivot of plastic hinge on both sides of the loop. The oval shape of the plug-in-system will ensure correct positioning.

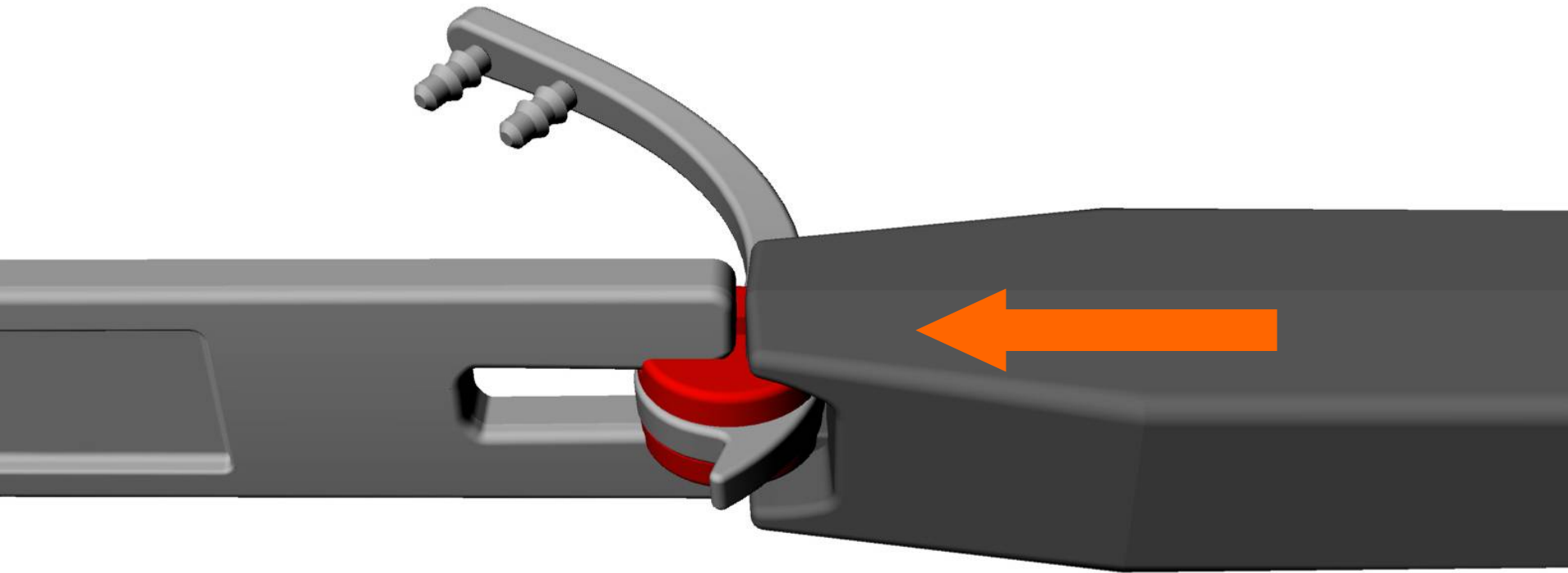
2. Place mounting tool at the groove of the hinge



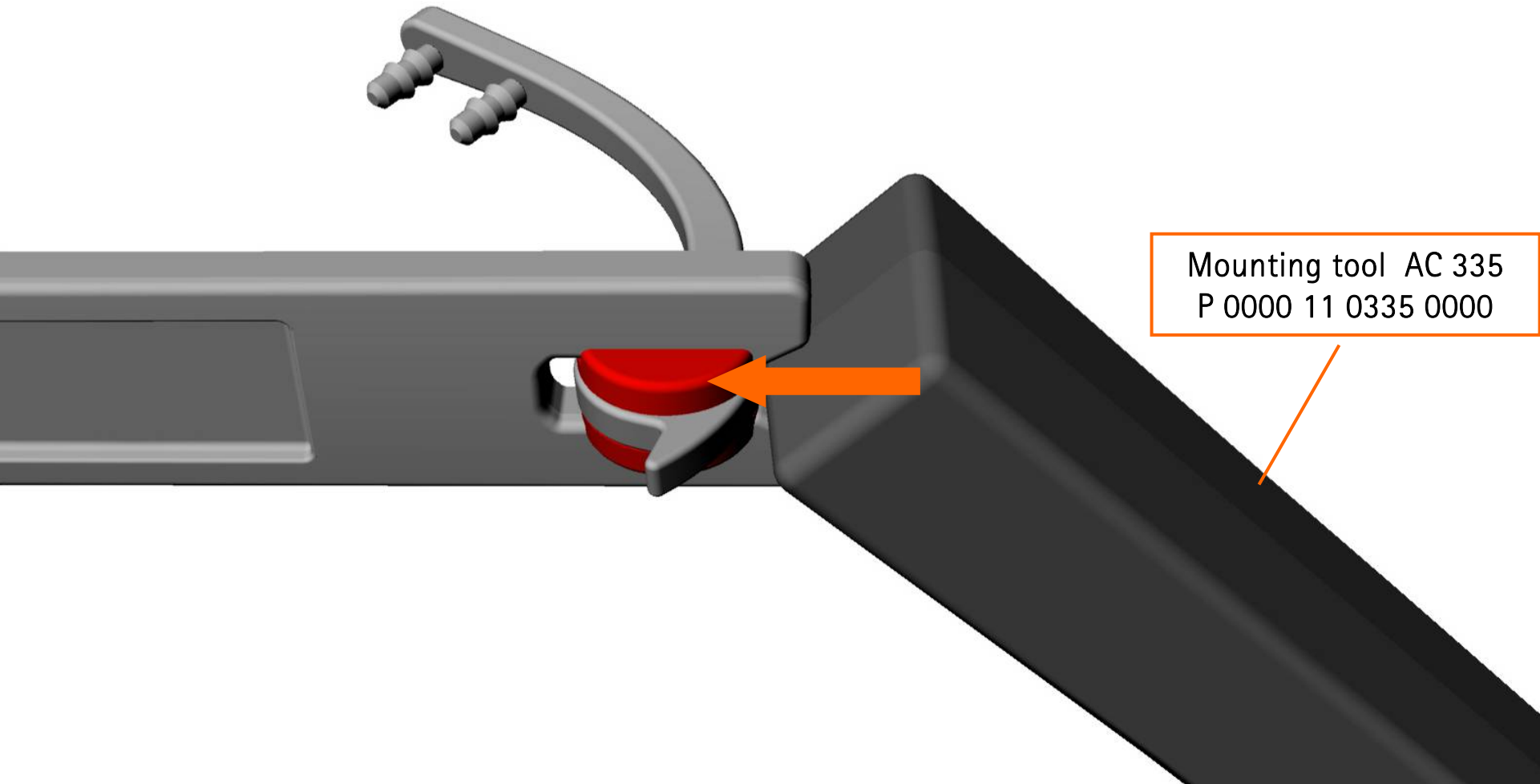
Mounting tool AC 335
P 0000 11 0335 0000

Silhouette

3. Press hinge into temple



5. Move hinge deeper into temple



Mounting tool AC 335
P 0000 11 0335 0000

6. Push sidepart by hand completely into the temple

