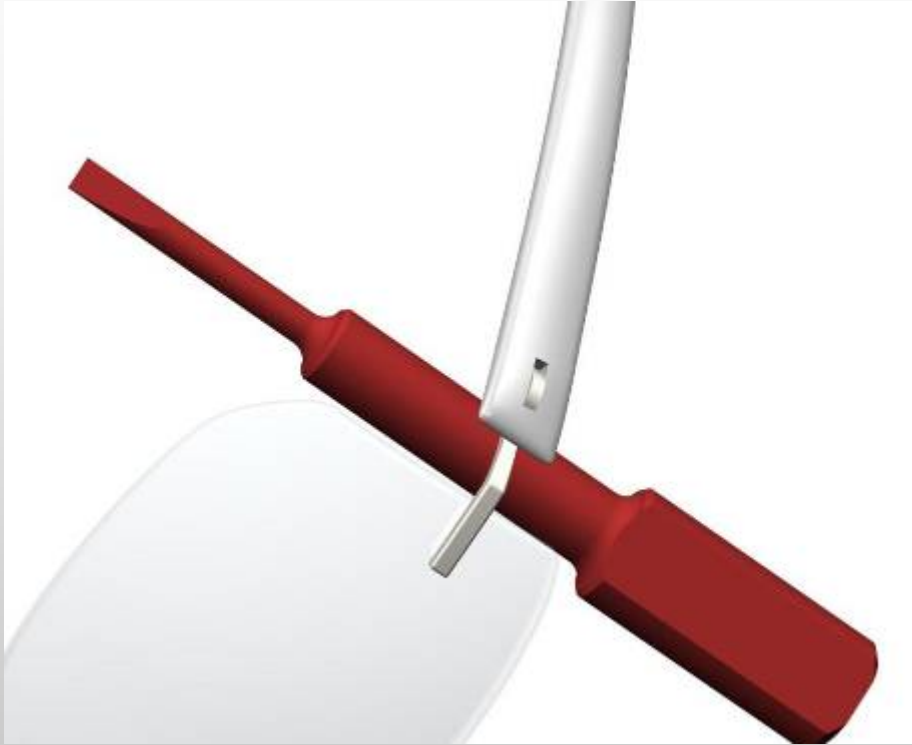
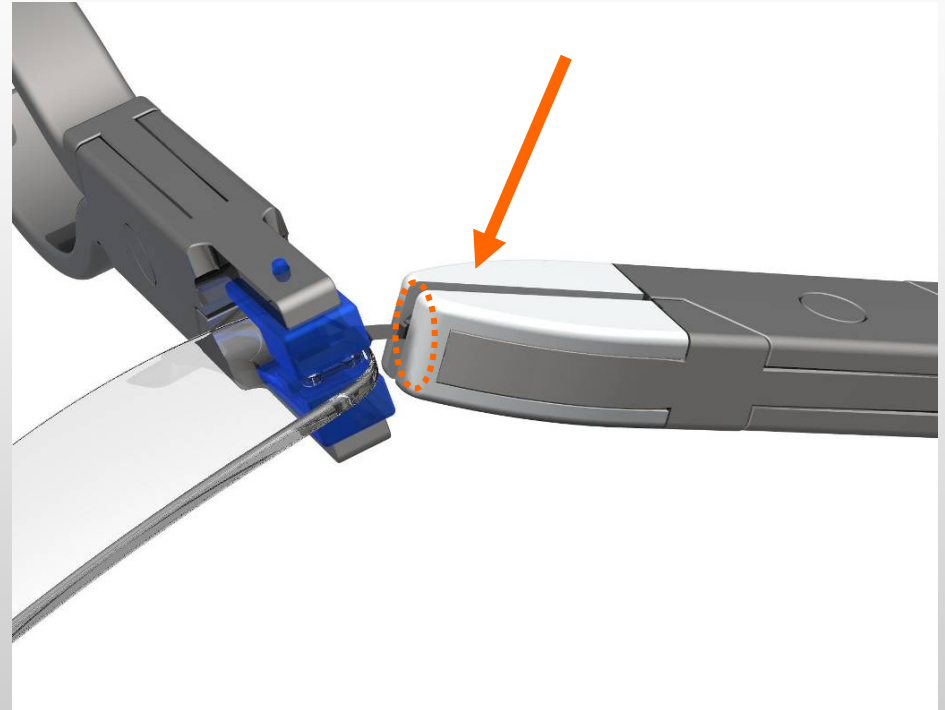
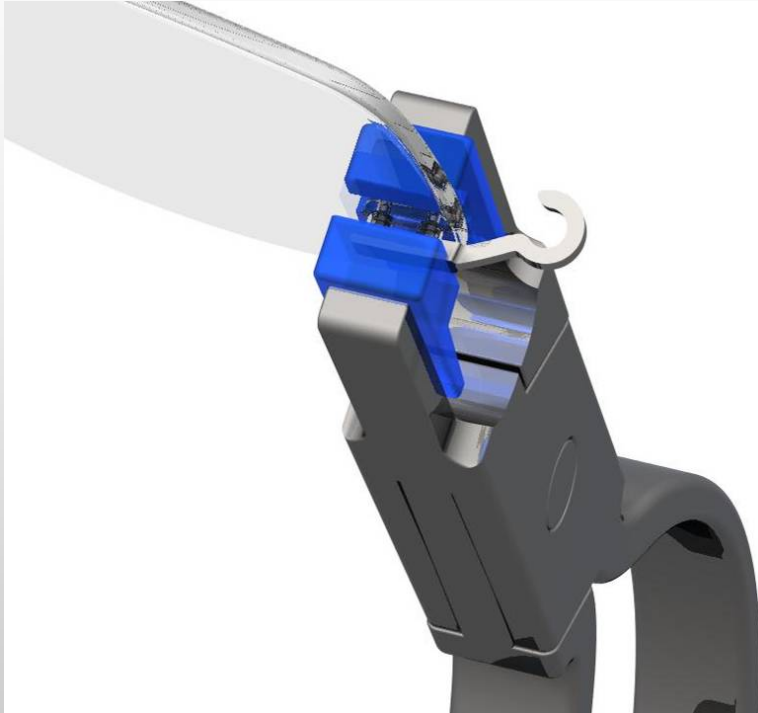


Modern Shades – Temple Disassembly



1. Place disassembly tool AC 336 at the stopping point where the trim and temple meet. Select necessary diameter depending on distance between temple and lens.
2. Close temple and press behind rounded part.

Modern Shades- Inclination



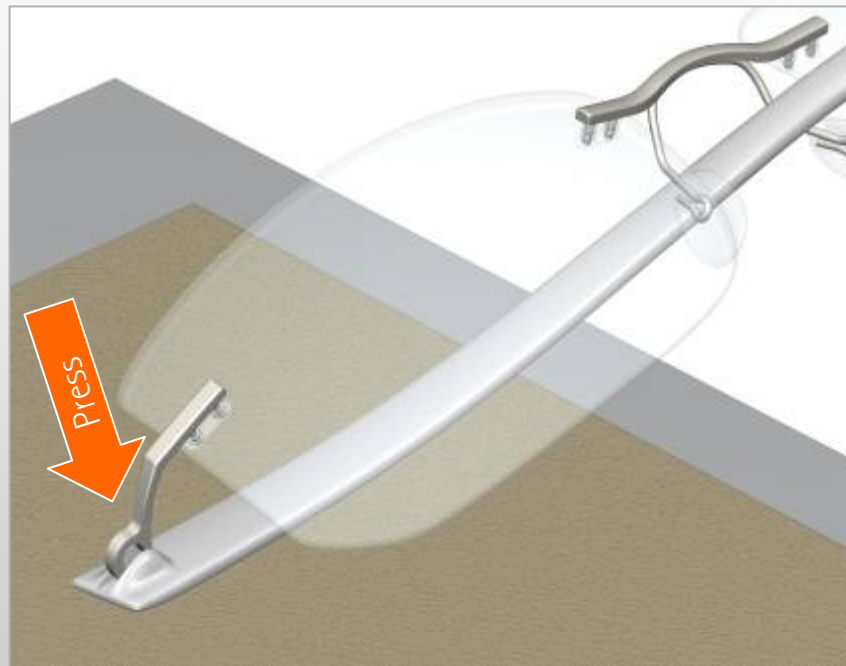
1. Disassemble temple.
2. Stabilize lens fixation with pliers:
P 0023.
TIP: Cover prescription lens on both
sides with protective film.

4. Adjust inclination and opening angle of
temple with plastic (nylon) jaw plier.
5. Close loop completely with sidepart of
pliers.

Modern Shades– Temple Assembly



1. Put temple on safe edge of a table.
NOTE: Do not put pressure on the lens fixation or decoration part of temple!



2. Place sidepart exactly at the opening of the temple and press in.